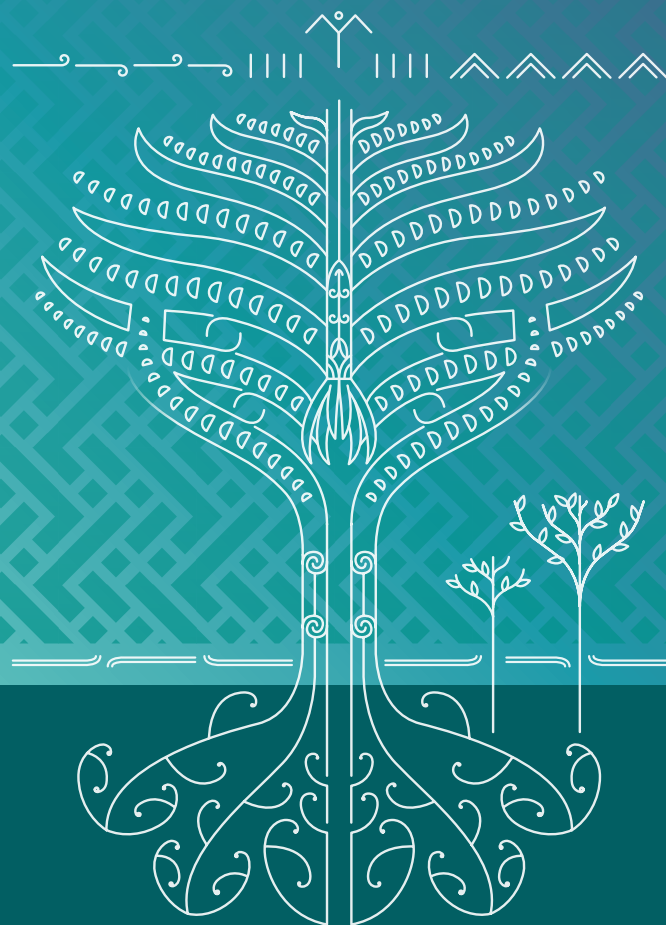


Te Wānanga Whare Tāpere o Takitimu

Ko te Amorangi ki Mua

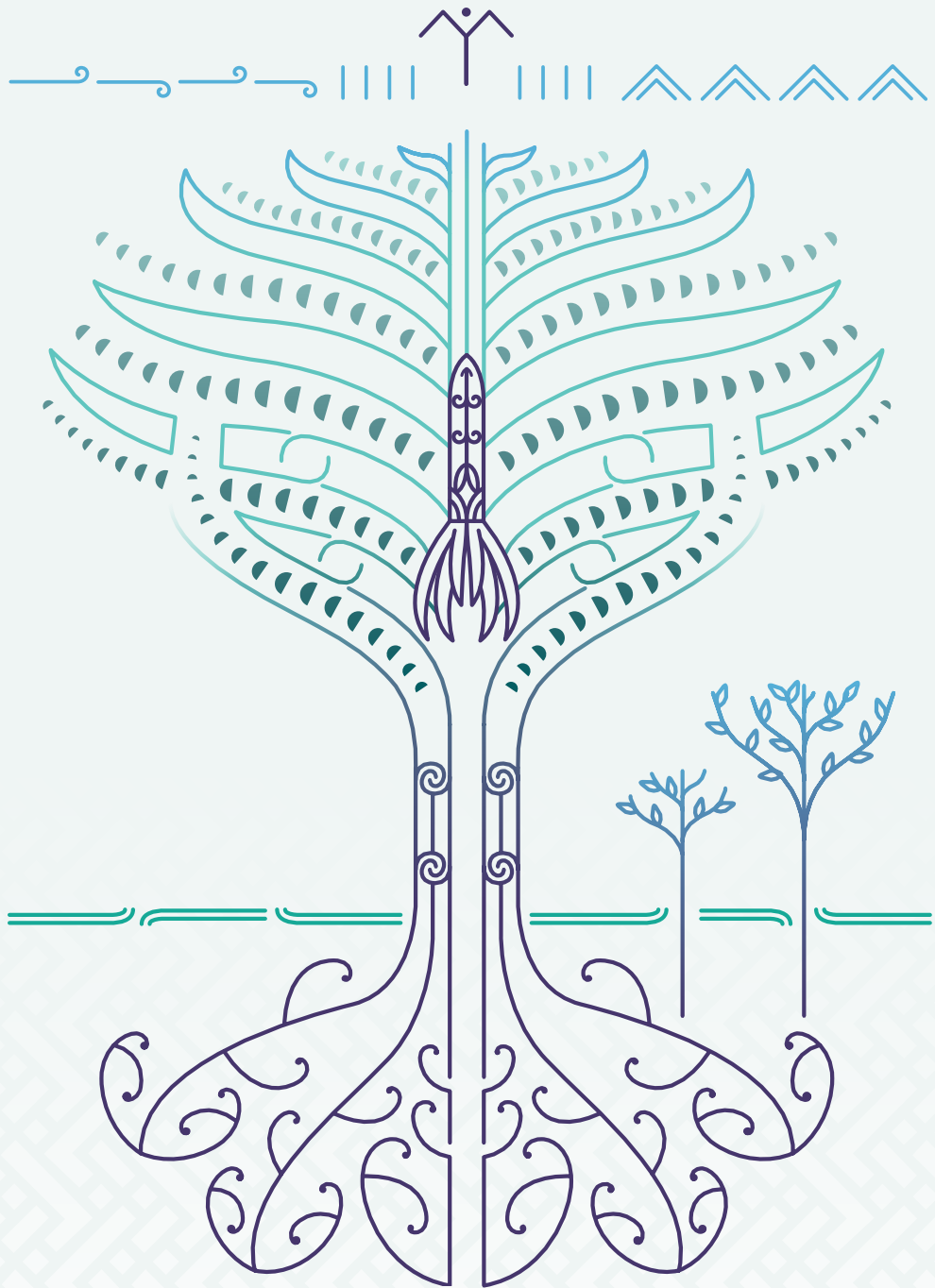
Kei Heretaunga



TE TARI AROTAKE MĀTAURANGA
Education Review Office

NZQA

Mana Tohu Mātauranga o Aotearoa
New Zealand Qualifications Authority





He Kupu Whakataki

Ko te mātauranga whai kounga, he mōtika o ia tamaiti, o ia rangatahi o Aotearoa, ā, ka pou herea ki ngā hapori akoranga e whakatū ana i te ākongā me ngā putanga ki te ākongā, ki te pūtaka o ngā mahi katoa.

Kua mahi ngātahi Te Tari Arotake Mātauranga, rātou ko Te Mana Tohu Mātauranga o Aotearoa, ko Te Rūnanga Nui o Ngā Kura Kaupapa Māori o Aotearoa, ki te mārāma me te miramira i te aronga motuhake o Te Wānanga Whare Tapere o Tākitimu. E mārāmahia ana e tēnei whakatōpūtanga aromātai, ko ngā taiao ako e āta whāia ana te whakapai tonutanga i ngā wā katoa, e āhei ana ki te poi-poi i ngā tino putanga ki ngā ākongā. Ka taea te whakapaitanga te whakatinana, i te wā ka toro atu ngā kaiwhakaako ki ngā whakaaturanga e hautū ai i ā rātou rautaki me ā rātou whakataunga.

He maha ngā wā ka arahina ngā whakarātonga akoranga whai hua e ngā tino kaiārahi tūtoro me ngā puna mātauranga. Ka hāngai pū tā rātou titiro, he mārāma te pūtaka e pou here ai i te whakapuakitanga o ō rātou horopaki ako. Ka whai wāhi matua, ko ngā whāinga i whakatinanahia ai ki ngā wawata o te whānau, tae atu hoki ki te nahanaha o ngā whakaritenga kia tutuki aua whāinga mā te marau me te whakapuaki hōtaka kia whai hua ai.

Ko ngā kōhanga reo, ngā kura, ngā wharekura, me ngā wānanga e noho motuhake ana, e noho mātua ana hoki ki te poi-poi me te whakarauora i te reo Māori i Aotearoa. Ka noho tahi ki Te Wānanga Whare Tapere o Tākitimu, ko te kōhanga reo, te kura, te wharekura, te *Kahurangi Dance Company*, me te wānanga. Ka tū pā tata aua wāhi katoa. Ko ngā reanga o ngā ākongā o ngā taiao ako nei, ka tīmata mai i ngā pēpi, ā, ka tae atu ki ngā kaumātua me ngā kuia. Ko te whakarauora i te reo Māori, i te mātauranga, me te ahurea o Tākitimu waka mā te whai wāhi ngātahi atu ki ngā wheako me ngā toi whakaari, koia te aronga e pou here ana i te kaupapa.

Ina he tauira, he ruarua noa hei whakatakotoranga paerewa, hei aromatawai rānei i te kounga, i te whai huatanga rānei o te whai wāhi atu ki te mātauranga rumaki reo Māori mai i whānautanga mai o te ākongā, tae atu ki tōna kaumātuatanga. Ko ngā tauira whakaritenga e whai hua ana i tēnei rangahau, kua puta i ngā aromātai o waho a Te Tari Arotake Mātauranga i te kōhanga reo, i te kura teina, me te wharekura i te tau 2022, ā, i ngā whakaaturanga tātari a Te Mana Tohu Mātauranga o Aotearoa i te wānanga, i te tau 2022. Ka whakatakoto i te mārāmatanga aromātai ki tēnā e whai wāhi atu ana, me te tino hua o te mātauranga me ngā akoranga rumaki reo Māori o te kounga kairangi mā ngā toi i Te Wānanga Whare Tapere o Tākitimu.

I mātakitaki mātou i ngā tamariki, i ngā ākonga, i ngā rangatahi, i ngā pakeke, me ngā kaumātua e whai hua ana ki te taiao ako e whakatairanga ana i te hōhonutanga o te reo Māori, ngā tikanga Māori, me te ao Māori. I kite mātou i te tautōhito o Te Wānanga Whare Tapere o Tākitimu ki te āta whakamahere haere mō meāke nei, me te aroturuki i ngā wā katoa hei arowhai i te ahu whakamua o te kōhanga reo, te kura, te wharekura, me te wānanga. Ka whai wāhi ā rātou tirohanga ki ngā whakataunga, ngā mahi, me ngā putanga ka whai ake, ērā i whakahāngaitia ai hoki ki ngā wawata o te whānau, o te hapū, me te iwi. Mō te hunga e whai wāhi ana ki Te Wānanga Whare Tapere o Tākitimu, he nui ō rātou tūmanako mō rātou anō, ā, mō tēnā me tēnā o ngā ākonga katoa.

E poipoia ana ngā ākonga ki te ahurea o te manaakitanga me te whanaungatanga. E whakapūmau ana Te Wānanga Whare Tapere o Tākitimu i te reo Māori, i ngā tikanga Māori, i te ao Māori, me te mātauranga Māori. Ka whakanuia, ka whakamanahia hoki te tuakiri, te reo, me te ahurea o ngā ākonga. I kitea e Te Tari Arotake Mātauranga, ko te oranga ā-whatumanawa, ā-tinana, ā-hinengaro, ā-wairua hoki o ia tangata, koia ki ngā tirohanga e noho whakapū ana ki te whai oranga, te harikoa, me te tōnui o ngā whānau, ngā hapū, te iwi, me te waka o Tākitimu ki anamata.

Waihoki, ko Te Kauwae Rangatiratanga te rōpū whakatōpū o ngā kaiārahi o Te Wānanga Whare Tapere o Tākitimu, ā, nā rātou i paihere i te hononga mauroa ki Te Pā Ariki o Rarotonga, ā, he hononga e whai wāhi matua ana ki te poipoi me te whakarauora i te reo Māori Kuki Airani, te mātauranga Māori, me ngā toi, ngā ahurea hoki o Tākitimu Vaka.

Mā tēnei pūrongo, e hiahia ana hoki mātou ki te whakapuaki i te kōrero mō te whakatinanatanga me te tupu o tēnei horopaki mātauranga, mō te aronga nui ki ngā wawata o ngā tīpuna, ā, mō tōna whai wāhi nui ki te whakarauoratanga o te reo Māori, o ngā tikanga Māori, me te mātauranga Māori hei painga mō ngā uri o Kahungunu, o Tākitimu waka.







Te Horopaki o te Rangahau

E tū ana Te Wānanga Whare Tapere o Tākitimu ki Heretaunga, ā, e whakarato ana i te mātauranga Kaupapa Māori ki ngā pīpī paopao, ngā tamariki, ngā rangatahi, me ngā pakeke, puta noa i tō rātou huarahi mātauranga mā te kōhanga reo, te kura, te wharekura, me te wānanga. Ko ngā putanga e wawatatia ana mō te katoa, ko ngā pūmanawa o ngā tīpuna o Tākitimu, ko ngā mātāpono ārahi o Te Whāriki a Te Kōhanga Reo, o Te Korowai, o Te Aho Matua, tae atu hoki ki ngā uara, ngā tuakiri, me ngā waiaro o roto.

Ka āta whakatau ngā kaiārahi o te kōhanga reo, o te kura, o te wharekura, me te wānanga, kia noho te tirohanga mauroa mō Kahungunu Tākitimu Waka ki te pūtake o ā rātou mahi katoa. Ko tō rātou ngākau nuitanga me tō rātou hononga ki ngā wawata o te whānau, e whakapakari tonu ana i te horopaki, e whakahāngai tonu ana i te ahu whakamua, ā, e whakatakoto ana i ngā tūmanako kia whai kounga, hei painga mō te katoa.

Te Aronga o te Aromātai

Ko ngā arotake a Te Tari Arotake Mātauranga ki ngā kōhanga reo me ngā kura kaupapa Māori, he mahi e whakatakoto ngātahitia ai me ngā whānau, ngā kaiārahi, ngā kaimahi, me ō rātou hāpori, kia hāngai ai ia aromātai ki ā rātou tirohanga ake, ō rātou wawata ake, me ā rātou whakatutukitanga ake – arā, kia hāngai pū te arotake ki te whare akoranga.

I te tau 2022 Te Kauwae Rangatiratanga i tonu ai kia kotahi atu te tukanga o te aromātai, te arotake, me te tātari i ngā wāhanga katoa o tō rātou huarahi mātauranga. Nā taua tonu, ka puta te aronga ngātahi ki waenga i Te Tari Arotake Mātauranga, i Te Rūnanga Nui o Ngā Kura Kaupapa Māori o Aotearoa, i Te Poari Matua o Ngā Kōhanga Reo, me Te Mana Tohu Mātauranga o Aotearoa. Ko tā te tukanga kaupapa nei, he whakapūmau i te tūturutanga o te whakaaro e meatia ana, *a te Māori, nā te Māori, me te Māori, hei Māori, mā te reo Māori.*

Mā te mahi ngātahi me ngā whānau, ngā kaiārahi, ngā kaimahi, me ō rātou hāpori, e arotahi ana Te Tari Arotake Mātauranga, Te Rūnanga Nui o Ngā Kura Kaupapa Māori o Aotearoa, me Te Mana Tohu Mātauranga o Aotearoa ki ngā māramatanga aromātai e poipoi ana i te takohanga me te whakapaitanga, e tautuhi ana i te ahu whakamua, ā, e whakapakari ana i te āheinga ki te aromātai. E hāngai ana te pūrongo nei ki ā rātou pūnaha, ā rātou whakahaeretanga, me ā rātou whakaritenga.

I roto i ngā mahi nei, i tahuri Te Rūnanga Nui o Ngā Kura Kaupapa Māori o Aotearoa, mātou ko Te Tari Arotake Mātauranga, ko Te Mana Tohu Mātauranga o Aotearoa ki te:

- pānui i ngā tuhinga matua
- hui tahi me ngā kaiārahi, ngā kaiako, ngā ākonga, ngā rangatahi, ngā pakeke, me ngā taikura
- hui me ngā kaiārahi ā-hapori, me te hunga i whai pānga atu mā te tangongitanga o ngā mahi me ngā wāhanga ki te huarahi o Te Wānanga Whare Tapere o Tākitimu
- mātakitaki i ngā wheako whakaako me ngā wheako ako
- hui tahi me te kai tahi ki te taha o Te Ariki, kia whai māramatanga ki te hua o ngā hōtaka i Rarotonga
- uiui i ngā whānau, hei kapo atu i ō rātou whakaaro
- whai wāhi atu hei manuhiri ki tēnei horopaki

I whakawhanakehia e Te Kauwae Rangatiratanga, e Te Rūnanga Nui o Ngā Kura Kaupapa Māori o Aotearoa, e Te Tari Arotake Mātauranga, me Te Mana Tohu Mātauranga o Aotearoa te pātai aromātai hei ārahi i te rangahau me te aromātai:

He pēhea rawa te whakawhanaketanga o Te Wānanga Whare Tapere o Tākitimu i ngā kaiārahi, mā ngā Toi, mai i ngā tau 0 ki te 65+? Mai i te kōpū o te whaea ki te kōpū o Papatūānuku.



Mana Ahua Ake

Ko te whai huatanga o ngā mahere rautaki o te pae tawhiti, o te whanaungatanga me te manaakitanga, ka whai wāhi katoa atu ki te angitu o Te Wānanga Whare Tapere o Tākitimu, me te whakaratonga o te mātauranga ki te katoa. Ko Tama Huata te tipuna rangatira, nāna i tīmata Te Wānanga Whare Tapere o Tākitimu, ā, nāna i ārahi te whakatinanatanga o ngā wawata o te whānau mō te mātauranga hūrokuroku, e mau ana i te hōhonutanga o te reo Māori, o te Mātauranga Māori, me te Tākitimutanga, hei painga mō ngā uri o Tākitimu waka.

Ko ngā kaumātua i tautoko i te tīmatanga me te whakatūnga o Te Wānanga Whare Tapere o Tākitimu, ko Tā John Bennett, rātou ko Te Amorangi Wī Te Tau Huata, ko Ringahora Hēni Ngakai Huata, ko Iritana Tāwhiwhirangi, ko Bill Hamilton, ko Joe Northover. I tēnei wā, ko ngā kaitiaki i te poari, ko John Barry Heperi – Smith (Heamana), ko Mike Paku (Kaitiaki), ko Tangiora Huata (Kaitiaki/Kaiwhakaū), ko Ariki Huata (Kaitiaki), ko Ellison Huata (Kaitiaki), ko Sholan Ivaiti (Pā Ariki – Māngai mō Tākitimu Waka) ko Heke Huata (Kaitiaki), ko Leigh Mc Gahey (Kaitiaki), me Narelle Huata (Kaitiaki Matua me te Kaiwhakahaere Matua).

E whakamihi ana te pūrongo nei i te Oātai, i te whakareretanga i tuku iho mai ai i ngā kaitiaki whakapūmau me ngā mema whakapūmau. Ko ngā wawata me ngā tirohanga o aua kaiārahi katoa, kua whakaputaina ki te aronga o Te Wānanga Whare Tapere o Tākitimu ki te whakahirahiratanga o te mātauranga mauroa, o te mātauranga hūrokuroku, mō te Māori, me te Māori.

Ko tā Te Wānanga Whare Tāpere o Tākitimu, he tino whakapuakitanga o te aroha me te whakaute mō te whānau, te hāpori whānui, ngā hapū, te iwi, me te waka. Ko tēnā me tēnā o Te Wānanga Whare Tapere o Tākitimu, mai i te whānau ki ngā kaumātua, ngā kaiako, me ngā kaiāwhina, kei te maramahia e te katoa ā rātou whakaritenga, ā, ka noho ngātahi ō rātou tūranga, kia hāpai ai tētahi i tētahi. Ko te whāinga o ngā taiao pēnā, he whakatakoto i te tino tūāpapa mō te eke angitu o ngā ākongā, ngā whānau, ngā hapū, te iwi, me te waka.



Te Rangatiratanga

I mōhio ngā kaiārahi tūtoro nei, he awhero nui ki te whakatakoto i tētahi huarahi ako hūrokuroku mō ngā whakaturanga katoa ‘mai i te kōpū ki te kōpū’, me te kawe atu i te ākongā i te kōhanga reo ki ngā taumata o te tohunga, ki tua atu hoki. Heoi anō rā, *ko ngā mea o mua, koia ka meatia anōtia*. Mā roto mai i taua tūmanako, ko tētahi whāinga matua, arā, ki te whakarato i tētahi taiao motuhake e māoriori ai i te ako, kia rumakina, ā, kia rere hūrokuroku te ako mā ngā taunekeneke ngātahi a te whānau, mā ō rātou wheako ngātahi hoki. Ka whakaputaina te tino rangatiratanga mā te whai wāhi mātātoa atu a te whānau ki te whakatinana i taua wawata.

Ko te whakatū i tētahi kōhanga reo e kitea ana hei āhuetanga matua ki te whāngai me te whakarauora i te reo Māori. Nō te Pipiri o te tau 1991 Te Kōhanga Reo o Te Wānanga Whare Tapere o Tākitimu i whakatūngia ai, hei whakatinanatanga o taua whāinga. I tīmatahia hei kōhanga reo noho kāinga, engari i muri noa tata iho i hūnuku ai ki tōna wāhi tū o tēnei wā tonu, ā, i taua wā i reira hoki te wānanga. I te tīmata te wawata o te whānau ki te whakatakoto i tētahi huarahi ako hūrokuroku ā-whakaturanga. I te kōhanga reo nei ngā mokopuna i whiwhi i ngā whai wāhitanga ki te ako me te puāwai ki tētahi taiao ki te taha o ō rātou whanaunga i te wānanga.

I kitea e mātou, ko te whanaungatanga, me te ū pūmau ki te mātauranga rumaki reo Māori i whakaaweawe i ngā whakaturanga a ngā whānau mō te huarahi mātauranga o tā rātou tamaiti. I kitea e Te Tari Arotake Mātauranga, e Te Mana Tohu Mātauranga o Aotearoa, e Te Rūnanga Nui o Ngā Kura Kaupapa Māori o Aotearoa, i ū Te Kauwae Rangatiratanga ki te rumaki reo Māori hei kōkiri i te anga whakamua, me te whai pānga o tēnā ki a rātou, ki ō rātou whānau, ō rātou hapū, tō rātou iwi, me tō rātou waka.

I te ngā tau ngahuru o 1990, i te putanga o ngā mokopuna o te kōhanga reo hei manu pīrere, i whakaarohia e te whānau, e tika ana kia tū he wāhi anō kia haere tonu ai ngā akoranga a ngā ākongā hei tino painga mō rātou, hei whakatinana tonu hoki i ō rātou whāinga ko ngā kaiārahi tūtoro. I kōkiri te whānau ki te whakatū i tētahi kura e poipoi ai i ngā ākongā, mai i ngā tau 1 ki te 8. Nō te tau 1995 te kura kaupapa Māori Te Aho Matua i whakatūngia ai. Mā taua mahi, i aro nui te whānau ki ngā matea mātauranga o ngā manu pīrere o te kōhanga reo, me te wawata o te whānau kia haere tonu ā rātou akoranga mā te mātauranga Māori.

Mai i te tau 1983, kua tino aro nui Te Wānanga Whare Tapere o Tākitimu ki te whakaturu i te ārahitanga me ngā kaiārahi i ngā toi whakaari Māori, mā tā rātou *Kahurangi Dance Company*. I te wā e whakaputaina ana te pūrongo nei, neke atu i ngā ākongā 2,000 kua whai wāhi atu ki ngā akoranga o ngā mōhiotanga me ngā pūkenga ā-ariā, ā-ringā hoki. I te tau 1995, ko Tākitimu Wānanga te whakahaere tuatahi ki te whakarato i tētahi tohu mātauranga e pā ana ki ngā toi whakaari Māori.



Te Tino Uaratanga

Ko te tikanga whakaaro o te manaakitanga e pou here ana i ngā whakataunga ka whakatutukihia mō ngā ākonga me ā rātou akoranga. He mea nui kia whai māramatanga te mātauranga hūrokuroku ki ngā matea ake me te waiora ake o ia ākonga, tae noa atu ki ngā tino painga mō te katoa. Ka kitea ki te whānau, te pai o te mātauranga e whiwhi ana ā rātou tamariki, nā te tupu tonu o te rārangi ingoa o te kura i roto i ngā tau kua pahure ake nei.

I te tauranga ākonga ki te kura i piki haere, ka āta kitea te aro nui hoki ki ngā whakawhitinga ngāwari puta noa i ngā taumata, mai i te kōhanga reo ki te kura. Pērā anō i te hiahia kia whakawhiti atu ngā manu pīrere o te kōhanga reo ki te kura, tērā anō hoki te hiahia kia whakawhiti atu ngā ākonga o te kura ki te wharekura.

I te tau 2015 te Tāhuhu o te Mātauranga i whakaae ai kia panoni haere te kura ki tētahi Wharekura / Kura Hiato mō ngā tau 1 ki te 15. Ko ngā wawata o ngā tīpuna mō ngā uri o Tākitimu waka, i whakatinanahia kia tū ai te mātauranga '*mai i te kōpū o te whaea ki te kōpū o Papatūānuku*'.

Nāwai rā ka kitea e te whānau, e tika ana kia rahi ake te wāhi ako mō te tuputupu haere o ngā tauranga ākonga. He matawhānui ngā mahi whakariterite a Te Kauwae Rangatiratanga, kia tutuki ai taua tūāhuatanga. I te tau 2009 i whakaae ai te Tāhuhu o te Mātauranga ki te whakatū whare anō. Nā te tikanga kia whai atu i te huarahi uiui me ngā tāpaetanga kōrero i tōmuri tonu. Nā Te Tāhuhu o te Mātauranga me Te Kaunihera ā-Rohe o Heretaunga i tautoko i aua wā uaua.

I te tau 2016 tētahi tarahiti ā-hapū i tuku ai te whenua i te rori o Bennett ki Te Wānanga Whare Tapere o Tākitimu. I te tau 2017, i tonu ai te Minita o te Mātauranga i tētahi tautapa, kia āhei ai te whānau ki te whakawhanake i tētahi wāhi akoranga ki te rori o Bennett, ki Waipatu. Heoi anō rā, i te taenga mai o te KOWHEORI-19 ki Aotearoa i te tau 2020, i tōmuri anō te hanga whare. Nā te kaha manawanui o te whānau ki te whai i tā rātou tirohanga, e āta whakatau ana rātou hei kō ake nei o tēnei tau te hanganga tīmata ai.





Ngā Kitenga

He pēhea rawa te whakawhanaketanga o Te Wānanga Whare Tapere o Tākitimu i ngā kaiārahi, mā ngā Toi, mai i ngā tau 0 ki te 65+? Mai i te kōpū o te whaea ki te kōpū o Papatūānuku.

E whai hua ana Te Wānanga Whare Tapere o Tākitimu ki te poi-poi i ngā pūmanawa o te ārahi ki ngā ākongā katoa, mā te whānuitanga o ngā tūmomo whai wāhitanga e whakaratohia ana mā ngā Toi, mai i ngā tau 0 ki te 65+. Ka aro nui tēnā ki ngā matea o ia ākongā ake, o te katoa anō hoki, mai i te kōhanga reo, puta noa ki te wānanga.

- He ngākau titikaha ō ngā mokopuna ki te whakapuaki i tō rātou taha auaha me tō rātou tuakiri. Ka whai wāhi atu rātou ki te whānuitanga o ngā tūmomo wheako ako whai kounga, e aronuitia ana, e whakapakarihia ana hoki rātou hei tangata takitahi, ā, hei ākongā anō hoki o roto i Te Wānanga Whare Tapere o Tākitimu. He maha hoki ngā whai wāhitanga mō ngā mokopuna ki te tūhura, me te whakapuaki i te taha auaha, te taha toi, me te taha pākiki.
- He pakari te whakaatu mai o ngā ākongā i ngā pūmanawa o te ārahitanga. Ko ngā waka, ngā hononga ā-iwi, ngā tikanga tuku iho, te hītori, ngā whakanuitanga, me ngā wāhi whakahirahira hoki o Ngāti Kahungunu me te waka o Tākitimu, ka tuituia katoatia puta noa i ngā wheako ako me ngā toi whakaari. He ngākau titikaha ō ngā ākongā, ka manaaki, ka ngana, ka ārahi hoki, ā, ka rongō i te angitu.
- He ngākau titikaha ō ngā rangatahi me ngā pakeke ki te whakapuaki i ō rātou ake whakaaro, me te eke angitu, te whai wāhi nui hoki hei kaiārahi i a rātou e whakapuaki ana i ō rātou pūkenga ki te motu, ā, ki te ao whānui tonu. Ka tupu haere te tangongitanga me ngā whai wāhitanga i te hōtaka Toi mō ngā ākongā ki te whakatinana me te whakawhānui ake i ngā tūāhuatanga katoa o te reo Māori. Ka whai pānga hoki tēnei ki ngā matatini me ngā tini hōhonutanga o te reo Māori mā ngā waiata, ngā mōteatea, ngā pao, ngā poi, me ngā haka. Ka riro i a rātou ngā tino pūkenga me ngā wheako e whakawhanake ana i tō rātou tūmāia ki te whakatau i ō rātou ake huarahi ako me ō rātou ake huarahi umanga.

Ka whai hua ngā mokopuna i te kōhanga reo, nā te ako ki tētahi taiao e miramira ana, e aro pū ana hoki ki ngā ariā Māori.

Ka arotahi ngā mahere rautaki ki te whakatutuki i ngā wawata o te whānau, ā, e pou herea ana ngā akoranga ki Te Whāriki a Te Kōhanga Reo me Te Korowai. Kua whakahāngaitia te marau mō te kōhanga reo me te kura, ā, kua whakatinanahia hei mātauranga Tākitimu.

Ki Te Wānanga Whare Tapere o Tākitimu, ko ngā toi whakaari tētahi rautaki matua e kōkiri ai i te ako o ngā mātauranga o te iwi, mā ngā waiata, ngā kēmu Māori, ngā mōteatea, ngā haka, ngā karakia, me ngā whakaari. Ko ngā tūmanako teitei kia matawhānui ngā mahere hōtaka, ko te taiao e aro nui ana ki te ākongā, me te hōhonutanga hoki o ngā wheako ako reo Māori, ka ārahi i ngā whakaakoranga me ngā akoranga. Ka whanake te taha auaha me te taha pākiki o ngā mokopuna hei ākongā e kaha ana ki te whakawhitiwhiti whakaaro, ā, ka kitea hoki tō rātou tino aronga toi whenuatanga.

I kitea e ngā kaiaromātai ngā mokopuna o te kōhanga reo e puāwai ana, ā, ka whakautea, ka māramahia, ka poipoia rātou ki tētahi hōtaka e whakapūmau nui ana i te Tākitimutanga. Ka kitea ki ngā mahere hōtaka a ngā kaiako me ngā kaimahi, te whakamahinga o te reo Māori me ngā tikanga hei whakapiki ake i te māramatanga o ngā mokopuna ki ngā wāhi whakahirahira me ngā kōrero tuku iho. Ka whakaakona ngā tikanga, ngā karakia, me ngā mōteatea. Ka tautoko ngā pakeke i ngā mokopuna ki te ako i aua pūkenga me te whai māramatanga ki ngā tino horopaki, ngā whakapuakitanga, me ngā tikanga o roto. I ia rā, ka ako, ka whakanui hoki ngā mokopuna i ō rātou hononga ā-whakapapa, i ngā uara me ngā whakapono, ā, ka kaha tautāwhitia rātou e te whānau whānui o te wānanga. E rumakina ana rātou ki te hōhonutanga o ngā wheako tūturu, ā, ka kite, ka rongo hoki i te reo Māori, ā, kei te tūmāia haere rātou ki te kōrero. He ngākau titikaha ō rātou ki te whakapuaki i tō rātou taha auaha me tō rātou tuakiri, mā te whai wāhi atu ki te whānuitanga o ngā tūmomo wheako ako e whakatairanga ake ana i tō rātou tū tangata me tō rātou whai aronga toi whenuatanga ki Te Wānanga Whare Tapere o Tākitimu.

I te wā o te aromātai i te kura teina, i kitea e te rōpū te noho rumaki o ngā ākongā ki tētahi taiao e āta poipoia ana i a rātou. E whanake ana ngā ākongā i tō rātou mana motuhake me tō rātou tākare hei ākongā. Ka kitea te kaha o tō rātou tuakiri hei uri o Tākitimu, ā, e whanake ana i tō rātou pakari me tō rātou ngākau titikaha hei kaiārahi, ā, hei kaikōrero hoki o te reo Māori. Ka rongo ngā ākongā i te hōhonutanga o te taiao ako reo, ā, ka rumakina rātou ki te reo Māori me ngā tikanga o Ngāti Kahungunu. E mōhio ana rātou ki te whakahirahiratanga e whai pānga ana ki ō rātou momo tūranga, ā rātou momo kawenga hoki hei kanohi o Tākitimu. Ka whakapoutamatia, ka whakateroa hoki te ako torowhānui a ngā ākongā, he auaha rātou, ā, ka eke rātou ki ngā taumata teitei o te angitu.

Ko tā ngā kaiārahi, ngā kaiako, me ngā kaimahi i te wharekura, he waihanga i ngā taiao whakaako, taiao ako hoki e poipoia ana i ia ākongā, i ō rātou wairua, ō rātou mauri, me ō rātou mana ake. I tēnei wā, e poipoia ana te wharekura i ngā ākongā o ngā tau 7 ki te 13. I kite mātou i te whai wāhi mai o ngā ākongā o ngā tau 7 me te 8 ki te wharekura, me te hāpai anō hoki o taua tūāhuatanga i tā rātou whakawhiti atu ki tō rātou tūnga hei tuakana. Mā roto mai i ngā toi, he manawa whakahī tō ngā ākongā ki te whai wāhi atu me te ārahi i ngā horopaki tūturu e whakakoia ana i tō rātou ūkaipōtanga, e hāpai ana i te ako, ā, e whakatairanga ana hoki i tō rātou waiora.

I kitea e mātou, ka whakamana ngā ākongā i tō rātou tuakiri hei uri o Tākitimu, ā, he ngākau titikaha mō rātou anō, he pakari anō hoki tō rātou kiritau. Ka riro i a rātou te tangongitanga o ngā pūkenga mō te āta whakawhitiwhiti whakaaro mā te reo Māori. Kua waihangatia e Te Wānanga Whare Tapere o Tākitimu tētahi hapori e whakatōpū tahi ana i ngā whakatupuranga katoa, ā, e noho pūmau ana ki te whakarauoratanga o te reo Māori. Ka eke angitu ngā ākongā ki tētahi taiao e mau nei i ngā hōhonutanga o ngā toi, i ngā taunekeneke māoriori, tūturu hoki ki waenga i ngā whakatupuranga katoa. He hononga matarau ki waenga i te tuakana me te teina, e whakapūmau ana i te ngohengohe o ngā tūranga ārahi. Ka whakatairanga tonuhia taua tūāhuatanga ki ngā tūranga, ā, i tō rātou whakatinanatanga i ngā pūmanawa matatini ki te ārahi.

He mātātoa te whakatewhatewha me te tūhura o ngā ākongā i te ao Māori me te ao whānui tonu. Ko tā Te Wānanga Whare Tapere o Tākitimu, he whakarato i ngā whai wāhitanga mō ngā rangatahi ki te toro atu ki te ao whānui mā ngā toi whakaari. Nō nā noa nei tētahi tira - ko ētahi tonu he ākongā - i whakawhiti atu ai ki Dubai ki te

whakaatu i ngā toi whakaari Māori ki te ao. Ko te whakaritenga ki te whakawhānui ake, mā te papa akoranga tuarua i Rarotonga me ngā whakawhitinga haere, ka whakapakari ake anō i ngā hononga ā-ahurea, ā-whakapapa hoki o ngā ākonga. Ka hāpai taua tūāhuatanga i ngā ākonga ki te ako me te rongō i ngā hononga tuku iho ki waenga i a Tākitimu Waka rāua ko Tākitimu Vaka.

He ngākau titikaha ō ngā ākonga hei kaiārahi o ā rātou akoranga. Kua whakatōngia e Te Wānanga Whare Tapere o Tākitimu te ahurea o te auaha me te tangongitanga. E hāpaitia ana te tūhura a ngā ākonga i ngā huarahi maha e tūhonohono ana i a rātou ki ngā mahi toi. Nā te āheinga o ngā ākonga ki te whakapā atu ki ngā tikanga ako me ngā marautanga e whai pānga ana - pērā i ngā waiata, ngā whakatauākī, ngā tauparapara, te ako ā-rōpū, ngā karakia, me ngā whakapapa - ka āta kitea te ngākau pono me te whakatairanga ake o ngā pūkenga ārahi o te tangata. Ka eke rātou ki ngā taumata teitei i roto i Te Taumata Mātauranga ā-Motu kua Taeā, tae atu hoki ki ngā whakamanatanga. Ka riro i ngā ākonga ngā tino wheako me ngā pūkenga e whakapakari ai i ō rātou ngākau titikaha ki te kōkiri i ō rātou ake huarahi ako, huarahi umanga hoki, me te whai i ō rātou wawata ake, me ērā hoki o te whānau.

Ko tā ngā rangatahi, ngā pakeke, me ngā taikura i te Wānanga, he whiwhi i ngā tino pūkenga, ā, he tautoko hoki i te whai oranga o Tākitimu waka. Ka whakatairangatia tō rātou ūkaipōtanga nā tā rātou whai wāhi atu ki te whakatupu, te atawhai, me te tiaki i te reo Māori me te Tākitimutanga. He mātanga ngā kaiārahi o te wānanga, he pakari ngā mōhiotanga me ngā pātuitanga ō rātou i te umanga me te hapori. Ka kaha whakamihia e ngā ākonga, ngā whānau, me ngā pia ngā painga whai hua i whakatutukihia ai. Ka riro i ngā pia o ngā akoranga te tino tūāpapa e hāpai ai i tā rātou whai atu i ngā huarahi umanga whai hua.

Ka whakapuaki hoki Te Wānanga Whare Tapere o Tākitimu i ngā huarahi whiwhi mahi me ngā whakawhanaketanga umanga mā te *Kahurangi New Zealand Māori Dance Company* me ngā hoa rautaki, ā, he āhuatanga e whai wāhi matua ana ki te āhua o te pia o Tākitimu. Ko tā te Wānanga me ōna hononga ki Te Amorangi Mātauranga Matua, ki Te Mana Tohu Mātauranga o Aotearoa, ki te Tāhuhu o te Mātauranga hoki, ko te 23 EFTS i te tau 2020, ki te whakapuaki i ngā hōtaka e pā anake te toi whakaari Māori me ngā toi Māori ki te SAC Taumata 3, piki ake. Ko tā te Wānanga whāinga, ko te whakapiki ake i ngā EFTS i te 23 ki te 40 i te tau 2020, me te tupu haere tonu hei te tau 2021 āmua ake nei, hei poipoi ake i ngā kawekawe whānui tonu o Tākitimu puta noa i te Moana-nui-a-Kiwa, arā, i ngā wāhi i tau ai te waka o Tākitimu. (I Hāmoa, i Whītī, i Tonga, i Hawaii, i Tahiti, i Rarotonga, i Ngāti Kahu – Te Tai Tokerau, i Ngāti Ranginui – Tauranga, i Te Tai Rāwhiti – Tūranga-nui-a-Kiwa, i Ngāti Kahungunu, i Ngāi Tahu – te rohe ā-iwi i Te Wai Pounamu.)





Panonitanga

Kua whai wāhi matua Te Wānanga Whare Tapere o Tākitimu ki te whakarauoratanga o te reo Māori me ōna tikanga, puta noa i te nuku o ngā whenua o Kahungunu, tae atu hoki ki te motu me te ao. Ka pupū ake i te kaupapa te āhurutanga ā-Tākitimu nei mō ngā rōpū reanga katoa. Kua whai angitu rātou ki te waihanga i tētahi taiao ako torowhānui whakahihiri mō ngā tamariki, ngā ākonga, ngā mātua, me ngā karani mātua. Ko te haumi i ngā wānanga, i ngā whakangungu, i ngā mahere – kātahi rā nō nā noa nei - i te hangarau hoki, kua pou herea katoatia te tupu o te Wānanga.

E tino pou herea ana te tautoko o ngā akoranga e te manaakitanga. I te wā o te mate urutā KOWHEORI-19, ka pupū ake ngā whai wāhitanga ki te tautoko i ngā ākonga, ngā kaimahi, me te whānau whānui mā ngā huarahi hou me ngā huarahi auaha. Ko te waiora o te katoa te aronga matua. I kaha āwhina a Tākitimu Ora i ngā ākonga me ngā whānau, ā, i hāpai hoki i te noho tonu ki te wānanga, ko ērā o ngā ākonga i te rongo pea i ngā pēhitanga me ngā taumahatanga o te wā.

Kua tū ake te kapa whakaari o Kahurangi hei kanohi mō Aotearoa ki te ao whānui. I whakawhānui ake taua tūāhuatanga i ngā wheako me ngā akoranga a ā rātou ākonga, ā, i whakapuaki hoki i ngā whai wāhitanga whiwhi mahi motuhake, heoi, mei kore ko Kahurangi, e kore rānei pea aua whai wāhitanga e puta ake. Ka kitea e Te Mana Tohu Mātauranga o Aotearoa te taumata teitei o te tangongitanga me te auaha i te urupare atu ki te mate urutā o te ao. Mō ngā Taikura – arā, mō ngā ākonga kaumātua tonu – ka aro nui ki tō rātou waiora me tō rātou atawhai. I hāpaitia a Kahurangi me ngā ākonga pā tata i roto i ā rātou akoranga ā-ipurangi. I te tau 2022, kei te whakatinana rātou i tā rātou tohu mātauranga e pā ana ki Ngā Toi, nā rātou anō, mā rātou anō i whakawhanake. Ka puta i ngā kōrero i ngā hui, ehara i te mea kei te arahina noatia te wānanga e te hunga whakaaweawe, engari kē kei te whakawhanake hoki i te hunga whakaaweawe, rātou kua tahuri atu ki te whakatakoto i ngā panonitanga whai hua mō ō rātou whānau, mō te hāpori whānui tonu o Tākitimu, tae atu hoki ki ngā toi e tāwharautia ana e Te Wānanga Whare Tapere o Tākitimu.

Kua roa nei ngā kaiārahi e aro nui ana ki te hāpai i ngā rangatahi i roto i tēnei ao, ā, i tā rātou whai atu hoki i ngā huarahi mahi. I te wā o tēnei rangahau, e 470 ngā mema o te whānau i tautokona kia whiwhi rātou i ā rātou raihana motokā. Ko ngā kōkiritanga, pērā i a 'Kete' (he kaupapa awahi pakihi) me 'Ōrawa' (he hōtaka ārahitanga mō ngā wiki e rima), ka whai wāhi atu ki te hāpai i te whai mahi ake a ngā ākonga. Ko aua whakatutukitanga e haere ngātahi ana me te whāinga o Tākitimu Ora ki te hāpai ake i ngā whānau e rongo ana i ngā taumahatanga, kia ruia atu te tārure, kia puāwai kē.

I Te Wānanga Whare Tapere o Tākitimu e whakatairanga ake ana i ngā akoranga me te kounga o te whai oranga o ngā uri o te waka o Tākitimu, ko tā Te Kauwae Rangatiratanga, he tautoko i ō rātou tuākana o Tākitimu Vaka. I hui tahi Te Pā Ariki o Rarotonga rāua ko Tama Huata i ngā tau ngahuru 1990, ā, i whakapuaki rāua i ō rāua wawata me ō rāua tūmanako mō ō rāua whānau. I te whakanuitanga tuatahi o Tākitimu i te tau 2008, i whakapūmau anō i tō rāua hononga, ā, i whakariterite i ngā hononga ako tauutuutu.

I te Whiringa-ā-rangi o te tau 2020, nā Te Whare Ariki o Tākitimu, nā Te Pā Ariki rāua ko Kainuku Ariki i waitohu tētahi kī taurangi ki te taha o Te Wānanga Whare Tapere o Tākitimu, hei āta whakapūmau i tō rātou nā hononga. I te Here-turi-kōkā o te tau 2021 Te Wānanga Are Tapere o Tākitimu i whakarewahia ai. Ka whakatinana a Vaka Tākitimu i tētahi marautanga mātāmuri ka whakapuaki ai mā ngā toi, ā, ka hāpai hoki i te whakarauoratanga o tō rātou reo, ō rātou toi, me tō rātou ahurea. E whakaritea ana kia whakatinanahia taua kōkiritanga hei te Hōngongoi o tēnei tau. Ka whakapūmau te kaupapa nei i ngā hononga tuku iho ki waenga i a Tākitimu Waka rāua ko Tākitimu Vaka.



Kōrero ā-Whānau

Mai te kōpu o te whaea ki te kōpu o te whenua – Education for all ages

‘The success of the kaupapa is with the whānau’

*“Ko wai tō Kōhanga Reo?” – **kaiako voice***

*“Ko te Kōhanga Reo o Te Wānanga Whare Tāpere o Takitimu!”
– **mokopuna voice***

*“We are about stages not ages” – **Te Kauwae Rangatiratanga***

‘High expectations for students, staff and whānau’

*‘Students are alert to every area of knowledge that they choose to
pursue in their lives’*

*“Ina ka hapa kaore i te whiwhi hamama te pahu ranei mena
ka hapa, ka hapa” – **student voice***

*“Ko Te Whare-Tāpere tō mātou ahua” – **student voice***

*“Tē taea te tu hei kaikaranga ki te marae e ahei ana te ako ki te
wānanga” – **student voice***

*“The wānanga is a village that connects at all levels” – **whānau voice***

*“Ko te mea nui ko te reo” – **student voice***

*“Te Wānanga Whare Tāpere gave me the means to go back to my
hapū and contribute” – **raukura voice***

Ngā kitenga me ngā āheinga anamata

Ka poipoi te wāhi akoranga hou i te rori o Bennett i te takiwā o ngā ākongā 300, me te 50 o rātou i te kōhanga reo. He tino pikinga taua tatauranga i te raihana o te kōhanga reo, ā, ka hāpai i te whai wāhi mai o te tokomaha ake o ngā mokopuna me ō rātou whānau ki te kaupapa nei.

E whakatinanahia ana ngā wawata o te mātauranga hūrokuroku mauroa, mā te tauira i āta whakaritea ai e Te Wānanga Whare Tapere o Tākitimu. He mea nui, kia tautokona tā rātou whakaū i ngā hononga, puta noa i ngā wāhanga ako katoa ki tō rātou wāhi akoranga hou.

Ka whakatairanga ngā hononga ōpaki me ngā hononga ōkawa i te ako a ngā ākongā, me tō rātou waiora. Ko ngā hau wānanga he whai wāhitanga mō ngā ākongā katoa o Te Wānanga Whare Tapere o Tākitimu ki te hui tahi i ia rā, me te whakanui, te ako hoki mā ngā hononga ki waenga i te tuakana me te teina, ki te wāhi kotahi.

Ko te whakaritenga ki te whakawhānui ake, mā te papa akoranga tuarua i Rarotonga, ka whakapakari ake anō i ngā hononga ā-ahurea, ā-whakapapa hoki o ngā ākongā. Ka whakapūmau hoki taua tūāhuatanga i te aronga a Te Pā Ariki, i tōna whai pānga matua ki tēnei tirohanga, me te aronga hoki ki te whakapakari ake i te reo Māori Kuki Airani, i ngā toi, ā, i te ahurea hoki.

Ko tā Te Tari Arotake Mātauranga me Te Mana Tohu Mātauranga o Aotearoa mahi, he rapu huarahi ki te mahi ngātahi āmua ake nei, kia pai ake ai te aro atu me te pūrongo atu i te āhua o ngā mahi a ngā whānau, ngā hapū, te iwi, me te waka ki te whakarato i te mātauranga i roto i ō rātou ake rohe, me te whai pānga matua o ngā iwi me ngā waka ki te whakarauoratanga o te reo Māori me te mātauranga Māori.



Lynda Pura-Watson
Kairuruku
Te Tari Arotake Mātauranga

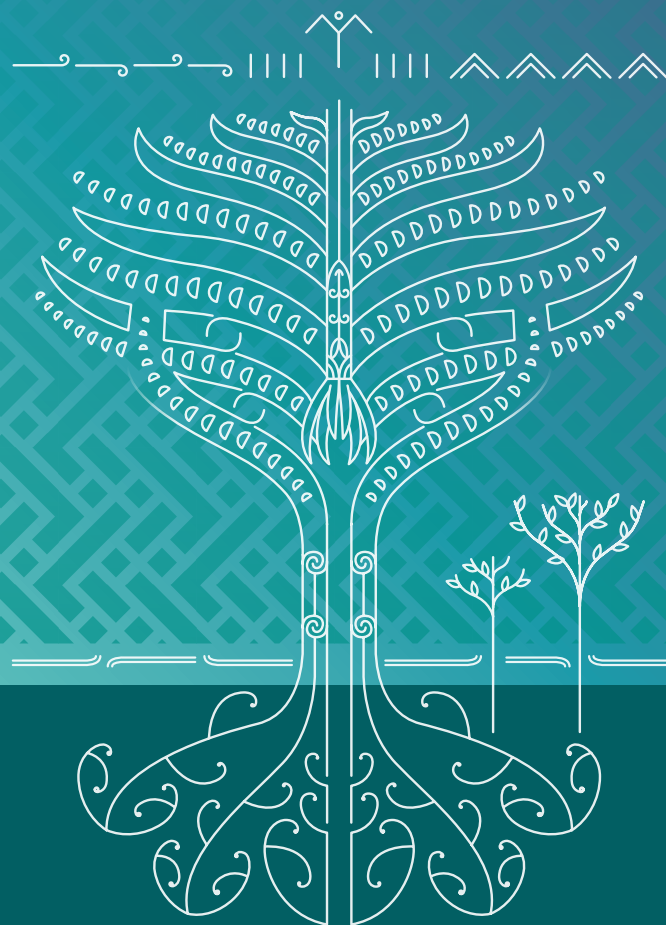


Alex Bidois
Te Manahautū Tuarua – Māori
Mana Tohu Mātauranga o Aotearoa

Te Wānanga Whare Tāpere o Takitimu

Ko te Amorangi ki Mua

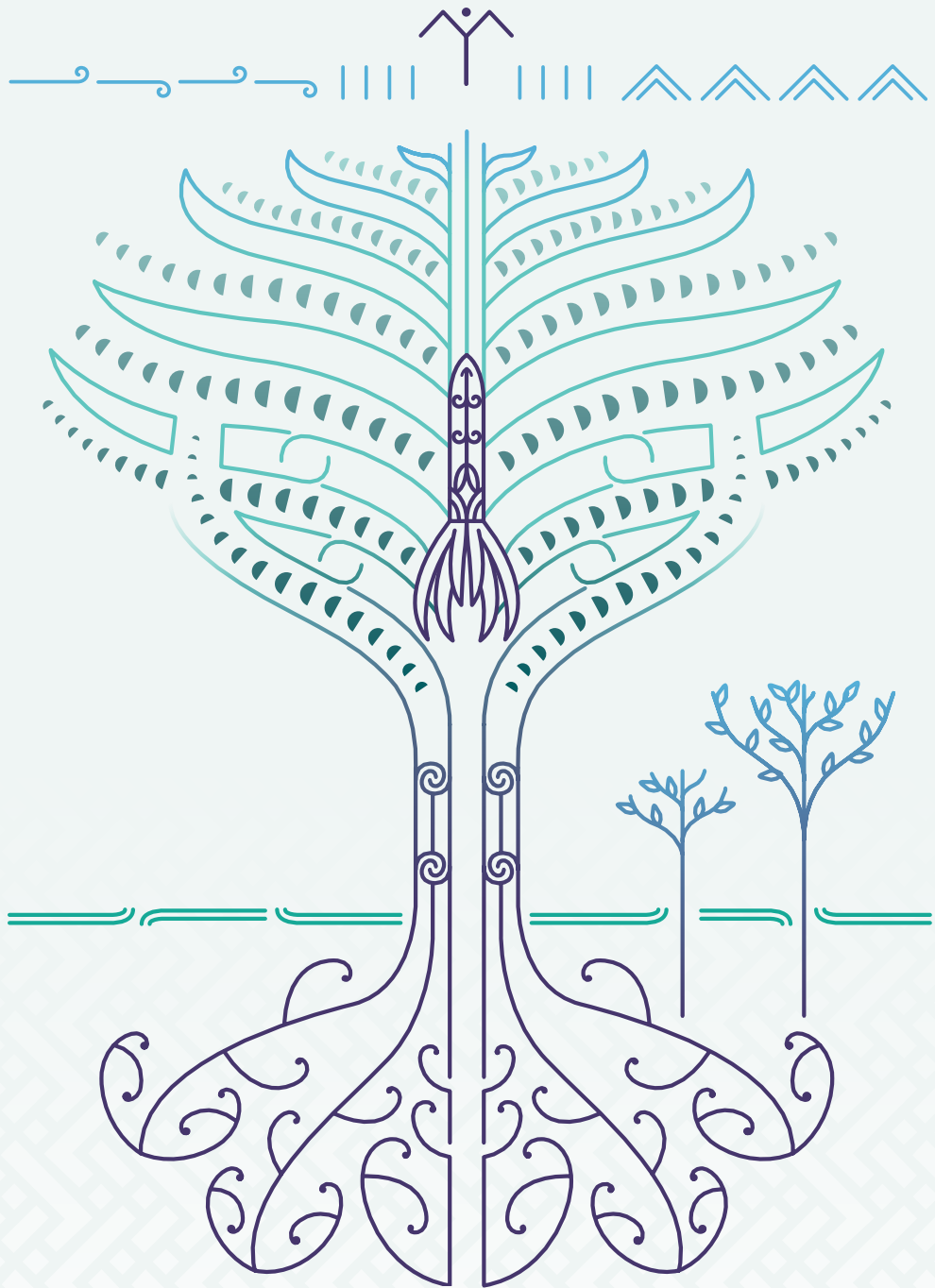
Kei Heretaunga



TE TARI AROTAKE MĀTAURANGA
Education Review Office



Mana Tohu Mātauranga o Aotearoa
New Zealand Qualifications Authority





Foreword

Quality education is the right of every child and young person in Aotearoa and is underpinned by learning communities that place the learner and learner outcomes at the centre of all activity.

The Education Review Office | Te Tari Arotake Mātauranga (ERO), The New Zealand Qualifications Authority NZQA, and , Te Runanga o Ngā Kura Kaupapa Māori have worked together to understand, and highlight the unique approach of Te Wānanga Whare Tāpere o Takitimu. This combined evaluation team understands that learning environments on a continuous, deliberate journey of improvement can foster the best outcomes for learners. Improvement can be realised when educators draw upon evidence to direct their strategy and decision making.

Successful learning organisations are often led by strong influential visionaries and knowledge holders. They have a strong view and clear purpose underpinning the creation of their learning settings. Goals encapsulating whānau aspirations are critical, as is deliberate planning for achieving these through successful curriculum and programme delivery.

Ngā Kōhanga reo, kura and wharekura and Wānanga are unique and critical to nurturing and revitalising te reo Māori in Aotearoa. Te Wānanga Whare Tāpere o Takitimu is made up of Te Kōhanga reo, a kura, wharekura, Kahurangi Dance Company and Wānanga. All are located in very close proximity. Learners across these learning environments span an age range from babies to kaumatua and kuia. Revitalising te reo Māori, mātauranga and culture of Takitimu waka through shared experiences and the performing arts underpins the kaupapa.

There are few models, if any, from which to base a benchmark, or assess the quality of, or the benefits of participating in an immersion Māori education setting through the view of a learners birth to becoming a kaumatua. The effective practice examples in this study are drawn from Te Tari Arotake Mātauranga (ERO) external evaluations of the kōhanga reo, kura teina and the wharekura in 2022, and on Te Mana Tohu Mātauranga o Aotearoa (NZQA) 2022 audit findings of the Wānanga. These provide evaluation insights into what contributes to, and the distinct value of high quality Māori immersion education and learning through the Arts at Te Wānanga Whare Tāpere o Takitimu.

We observed children, students, young people, adults and elders successful in learning environment, rich in te reo Māori, tikanga Māori and te ao Māori. We found Te Wānanga Whare Tāpere o Takitimu strategically adept at planning for the future and constantly monitoring to check how the kōhanga reo, the kura, the wharekura and Wānanga progress. Their insights inform future decisions, actions and outcomes aligned to aspirations held by whānau, hapū and iwi. Those involved in Te Wānanga Whare Tāpere o Takitimu have high expectations for themselves and each and every learner.

Learners are nurtured in a culture of manaakitanga and whanaungatanga. Te Wānanga Whare Tāpere o Takitimu upholds te reo Māori, tikanga Māori, te ao Māori and mātauranga Māori. Learners' identity, language and culture are valued and validated. ERO found that emotional, physical, intellectual and spiritual wellbeing of individuals is viewed as fundamental to the future health, happiness and prosperity of the whānau, hapū, iwi and Kahungunu Takitimu waka.

Furthermore, Te Kauwae Rangatiratanga, the collective leaders of Te Wānanga Whare Tāpere o Takitimu, have established an enduring relationship with Pa Ariki o Rarotonga that is critical to nurturing and revitalising Cook island's Māori, mātauranga Māori and the arts and cultures of Takitimu Vaka.

Through this report we also seek to tell the story of how this education setting came to realisation, grew and responded to the aspirations of tipuna, and is revitalising te reo Māori, tikanga Māori and mātauranga Māori for descendents of Kahungunu Takitimu waka.







Te Horopaki ā-Rangahau

Research context

Te Wānanga Whare Tāpere o Takitimu – Hastings, provides Kaupapa Māori education for pīpīpāopao, tamariki, rangatahi and pakeke throughout their kōhanga reo, kura, wharekura and Wānanga journey. The attributes of Takitimu tipuna, the guiding principles of Te Whāriki a Te Kōhanga Reo, Te Korowai, Te Aho Matua, their values, dispositions and attitudes are desired outcomes for all.

The kōhanga reo, kura, wharekura and Wānanga leadership ensures that the longstanding vision for Kahungunu Takitimu Waka is at the forefront of all they do. Their commitment and connection to the aspirations of whānau continue to build the context, focus direction, and set expectations for quality for all.

Evaluation approach

ERO's reviews of kōhanga reo and kura kaupapa Māori are co-constructed in collaboration with whānau, leaders, kaimahi and their communities so that each evaluation reflects their vision, aspirations and achievements – one size *fits* one.

In 2022, Te Kauwae Rangatiratanga requested a joint process for the evaluation, review and audit of all parts of their education pipeline. This led to a shared approach between Te Tari Arotake Mātauranga, Te Runanga o Ngā Kura Kaupapa Māori, Te Kōhanga Reo National Trust and Te Mana Tohu Mātauranga o Aotearoa. The kaupapa methodology used for this work upholds the integrity of *Māori, by Māori, with Māori, as Māori and in te reo Māori*.

ERO, Te Runanga o Ngā Kura Kaupapa Māori and NZQA in collaboration with whānau, leaders, kaimahi and their communities are focused on evaluation insights that foster accountability and improvement, identify progress and build evaluation capability. This report reflects their systems, operations and management practices.

Te Runanga o Ngā Kura Kaupapa Māori, ERO and NZQA:

- read guiding documents
- had hui with leaders, kaiako, students, rangatahi, pakeke and taikura
- had hui with the local community leaders and those who at varying levels and stages had contributed to the journey of Te Wānanga Whare Tāpere o Takitimu
- observed teaching and learning experiences
- joined with te Te Ariki to share kai and understand the value of the programmes in Rarotonga
- interviewed whānau to capture and share their perspectives
- participated as considered manuhiri in this setting

Te Kauwae Rangatiratanga, Te Runanga o Ngā Kura Kaupapa Māori, ERO and NZQA developed the evaluation question to guide the research and evaluation:

How well does Te Wānanga Whare Tāpere o Takitimu develop leaders through the Arts from ages 0-65+?

Mai te kōpu o te whaea ki te kōpu o papatuānuku.



Mana Ahua Ake

Uniqueness

Effective long-term strategic planning, whanaungatanga and maanakitanga contributes strongly to the success of Te Wānanga Whare Tāpere o Takitimu and the provision of education to all. Tama Huata, the esteemed tipuna and founder of Te Wānanga Whare Tāpere o Takitimu led the realisation of the aspirations whānau held for seamless education provision, for descendants of Takitimu waka, steeped in te reo Māori, Mātauranga Māori, and Takitimutanga.

The Kaumatua who supported the initial establishment of Te Wānanga Whare Tāpere o Takitimu were – Sir John Bennett, Te Amorangi Wi Te Tau Huata, Ringahora Heni Ngakai Huata, Iritana Tawhiwhirangi, Bill Hamilton and Joe Northover. Today the board of trustees consists of John Barry Heperi – Smith (Chairman), Mike Paku (Trustee), Tangiora Huata (Trustee/Co-Founder), Ariki Huata (Trustee), Ellison Huata (Trustee), Sholan Ivaiti (Pa Ariki – Takitimu Waka Representative), Heke Huata (Trustee), Leigh Mc Gahey (Trustee), and Narelle Huata (Executive Trustee and Chief Executive Officer).

This report acknowledges the Oātai, the legacy left by the foundation trustees and members. The aspirations and visions of all these leaders is summarised through Te Wānanga Whare Tāpere o Takitimu focus on the importance of lifelong, seamless education for and with Māori.

Te Wānanga Whare Tāpere o Takitimu holds a strongly articulated, mutually acclaimed love and respect for the whānau, wider community, hapū, iwi and waka. Each individual within Te Wānanga Whare Tāpere o Takitimu from whānau to kaumatua, kaiako and kaiawhina are clear about their practice and acknowledge their roles as complementary to those that they are working alongside. Such environments work to create a strong foundation for learners, whānau, hapū, iwi and waka success.



Te Rangatiranga Autonomy

These visionary leaders realised it was ambitious to create an unbroken multi-generational path of learning, ‘from the womb to the tomb’, taking learners from kōhanga reo to tohunga levels and beyond. Nevertheless, *once as it was, so shall it be*. Within this aim is an underlying goal, providing a unique environment where learning would be natural, immersive, providing an organic learning flow through shared whānau interactions and experiences. Tino rangatiranga is demonstrated through the active participation across the whānau to realise these aspirations.

Establishing a kohānga reo was recognised as critical to the nurturing and revitalisation of te reo Māori. The creation of Te Kōhanga Reo o Te Wānanga Whare Tāpere o Takitimu in June 1991 is a realisation of this goal. The initial kōhanga reo was home-based in its inception, but soon relocated to the current site where the Wānanga was situated at the time. The aspiration of whānau for an unbroken multi-generational learning pathway was in the early stages of realisation. Through this kōhanga mokopuna were provided with opportunities to learn and flourish in an environment alongside their whānaunga at the Wānanga.

We found whanaungatanga connections, and enduring commitment to immersion education influence decisions whānau make about their child’s education pathway. ERO, NZQA and Te Runanga o Ngā Kura Kaupapa Māori recognised Te Kauwae Rangatiranga were clear about immersion te reo Māori as the way forward and what this meant to them, their whānau, hapū, iwi and waka.

In the late 1990’s as the kōhanga reo mokopuna moved toward graduating, the whānau felt it was important that they have somewhere to continue their schooling years to ensure the best outcomes for their tamariki, and the realisation of the goals shared by their visionary leaders. The whānau worked toward the establishment of a kura that would cater to students in Years 1 – 8. The establishment of a Te Aho Matua Kura Kaupapa Māori was realised in 1995. Through this action, whānau responded to the educational needs of the kōhanga reo graduates and to the aspirations whānau held for their children to continue their schooling in mātauranga Māori.

Te Wānanga Whare Tāpere o Takitimu have held a considerable focus on growing leadership, and leaders in Māori performing arts since 1983 through their Kahurangi Dance company. At the time of publishing this report more than 2,000 students have participated in courses where they access theoretical and practical knowledge and skills. In 1995, Takitimu Wānanga was the first organisation to offer a degree in Māori Performing Arts.



Te Tino Uaratanga

A philosophy of care underpins the decisions made for students and their learning. Seamless education requires understanding of individual's needs and wellbeing through to the best interests of the collective. Whānau satisfaction with the education their children receive is evident in the kura roll continuing to increase over the years.

As the roll increased it became evident that smooth transitions through the levels from kōhanga reo to kura are prioritised. As with the kōhanga reo graduates needing a kura, the kura graduates required a wharekura.

In 2015 the MoE gave approval for the kura to transition to a Wharekura / Composite School Years 1 - 15. The aspirations held by tipuna for education for descendants of Takitimu waka, *Mai te kōpu o te whaea ki te kōpu o papatuānuku*, were realised.

It became apparent to the whānau a larger site was needed to provide the growing numbers with an appropriate physical learning environment. Te Kauwae Rangatiratanga' planning to achieve this was thorough. The Ministry of Education (MoE) approved a rebuild in 2009. The realisation of the new build was delayed due to required consultations and submissions. The MoE and the Hastings District Council provided support during these challenging times.

A local Hapū Trust offered Te Wānanga Whare Tāpere o Takitimu whānau land on Bennett Road in 2016. In 2017, the then Minister of Education sought a designation to enable whānau to develop an education site at Bennett Road, Waipatu. Unfortunately the arrival of COVID 19 in Aotearoa in 2020 also delayed the build. With dogged perseverance the whānau pursued their vision and are confident the build will begin later this year.





Ngā Kitenga

Findings

How well does Te Wānanga Whare Tāpere o Takitimu develop leaders through the Arts from ages 0-65+?

Mai te kōpu o te whaea ki te kōpu o papatuānuku.

Te Wānanga Whare Tāpere o Takitimu successfully fosters leadership for all learners through the extensive range of opportunities provided through the Arts, from ages 0-65+. This responds to the individual and collective needs of learners within and across the kōhanga reo through to the wānanga.

- Mokopuna confidently express their creativity and identity. They participate in a range of quality learning experiences that consider and strengthen who they are as individuals, and as learners within Te Wānanga Whare Tāpere o Takitimu. There are many occasions for mokopuna to explore, be creative, artistic and inquisitive.
- Students confidently demonstrate qualities of leadership. Waka, iwi links, traditions, history, celebrations, and places of significance of Ngāti Kahungunu and Takitimu Waka are integrated in learning experiences and throughout the performing arts. Students are confident, caring and engaged learners who lead and experience success.
- Rangatahi and pakeke confidently express themselves, experience success and contribute as leaders as they share their skills both nationally and internationally. The Arts programme provides increased variation and opportunity for students to practice and extend te reo Māori in all its forms. This includes the complexities and deeper meanings of te reo Māori through waiata, mōteatea, pao, poi and haka. They gain exceptional skills and experiences that give them the confidence to determine their own learning and career pathways.

Mokopuna in the kōhanga reo benefit from learning in a setting where a Māori paradigm is illuminated, and centred.

Strategic planning focuses on achieving the aspirations of whānau, while learning is underpinned by *Te Whāriki a Kōhanga Reo* and *Te Korowai*. There is alignment across curriculum for the kōhanga reo and kura, manifesting as mātauranga Takitimu.

For Te Wānanga Whare Tāpere o Takitimu performing arts is a critical strategy to facilitate the transmission of iwi knowledge through waiata, kēmu Māori, mōteatea, haka, karakia and Whakaari. High expectations for comprehensive programme planning and a responsive environment rich in te reo Māori learning experiences guides teaching and learning. Mokopuna develop as creative, curious communicative learners who demonstrate a strong sense of belonging.

Evaluators observed mokopuna in the kōhanga reo thriving in an environment where they are respected, understood and nurtured in a programme that is endowed in Takitimutanga. Kaiako and kaimahi programme planning showed te reo Māori and tikanga Māori were used to increase mokopuna' understanding of ancestral places and stories. Tikanga, karakia and mōteatea were taught. Adults supported mokopuna to learn these skills and to understand about important context about their use and meaning. Mokopuna learn and celebrate their whakapapa connections, values and beliefs everyday embraced by the wider wānanga whānau. They are immersed in rich authentic experiences where they see, hear and kōrero te reo Māori with increasing confidence. They confidently express their creativity and identity through their participation in a range of effective learning experiences that enhance their sense of identity and belonging to Te Wānanga Whare Tāpere o Takitimu.

During this evaluation of the kura teina, the team saw that students in the kura were immersed in a nurturing environment. They are developing as autonomous enthusiastic learners. Students demonstrate a strong sense of identity as descendants of Takitimu and are developing as strong confident leaders and speakers of te reo Māori. Students experience a rich language learning environment where they are immersed in te reo Māori me ngā tikanga o Ngāti Kahungunu. They recognise the importance attached to the different roles and responsibilities they have as representatives of Takitimu. Student learning is holistic, scaffolded and accelerated they are creative and enjoy high levels of success and achievement.

Leaders, kaiako and kaimahi in the wharekura create teaching and learning environments that nurture individuals, their wairua, mauri and mana. The wharekura currently caters for students in Years 7-13. We observed that Year 7 and 8 students included in the wharekura, supported them to develop a deeper understanding of their role as tuākana. Students, through the Arts, proudly contribute to and lead authentic situations that affirm their ukaipōtanga, support learning and enhance their wellbeing.

We found students value their identity as Takitimu and are self-confident and display positive self-esteem. They acquire a repertoire of skills for effective communication in te reo Māori. Te Wānanga Whare Tāpere o Takitimu has created a multi-generational community that is committed to the revitalisation of te reo Māori. Students succeed in an environment, rich in the Arts, where interactions across generations are natural and authentic. Tuākana-tēina relationships are multi-faceted and reinforce the fluidity of leadership roles. This is further enhanced in the roles where they epitomise a myriad of leadership qualities.

Students actively investigate and explore te Ao Māori and the wider world. Te Wānanga Whare Tāpere o Takitimu provides opportunities for rangatahi to experience the wider world through performing arts. A delegation, including students, recently travelled to Dubai to exhibit Māori Performing Arts to a global audience. The development of a second campus in Rarotonga and reciprocal visits strengthen the intercultural relationships and whakapapa connections for students. This enables students to learn about and experience the historical connections of Takitimu Waka to Takitimu Vaka.

Students are confident leaders of their learning. Te Wānanga Whare Tāpere o Takitimu has embedded a culture of creativity and innovation. Students are supported to explore multiple pathways that connect them to the creative arts. Student's access to relevant pedagogies and marautanga such as waiata, whakatauāki, waiata, tauparapara, including group learning, karakia and whakapapa results in displays of personal integrity and elevated leadership skills. Students achieve high levels of success in National Certificates of Educational Achievement (NCEA) including endorsements. Students have exceptional experiences and gain valuable skills that give them the confidence to determine their own learning and career pathways and to pursue their personal and whānau aspirations.

Rangatahi, pakeke and taikura in the Wānanga gain valuable skills and support the wellbeing of Takitimu waka. Their ukai-pōtanga is enhanced as they contribute to the growth, nurture and protection of te reo Māori and Takitimutanga. The Wānanga is led by skilled leadership, with sound knowledge and strong networks with industry and the community. Learners, whānau and graduates speak highly of the valued outcomes achieved. Graduates of courses experience an excellent foundation for promising career pathways.

Te Wānanga Whare Tāpere o Takitimu deliver employment pathways and career development through the Kahurangi New Zealand Māori Dance Company and strategic partners which is an integral part of Takitimu graduate profile. The Wānanga through its relationships with Tertiary Education Commission, NZQA and MoE in 2020 had 23 EFTS to deliver programmes in Māori Performing Arts and Māori Arts at SAC Levels 3 and higher. The aim of the Wānanga was to increase the EFTS from 23 to 40 in 2020, with a continuous growth in 2021 onwards to better serve the Takitimu catchment which stretches throughout the Polynesian triangle where the Takitimu Waka landed. (Samoa, Fiji, Tonga, Hawaii, Tahiti, Rarotonga, Ngāti Kahu – Northland, Ngāti Ranginui – Tauranga, Te Tairāwhiti – Gisborne, Ngāti Kahungunu, Ngāi Tahu – South Island Tribal area).





Pānonitanga Transformation

Te Wānanga Whare Tāpere o Takitimu, has been pivotal in the renaissance of te reo Māori me ōna tikanga the length and breadth of the traditional boundaries of Kahungunu and both nationally and internationally. The kaupapa provides a safe Takitimu centric space for all age groups. They have successfully created an exciting and holistic learning environment for children, students, parents and grandparents. Investment in wānanga, training, planning and more recently technology have underpinned the growth of the Wānanga.

Learner support is strongly underpinned by manaakitanga. The COVID 19 pandemic provided opportunities to support students, staff and the wider whānau in new and innovative ways. The wellbeing of all was to the fore. Takitimu ora provided invaluable assistance to learners and whānau, supporting the retention of learners who might have been experiencing challenging and complex situations.

The performance company Kahurangi have become ambassadors for Aotearoa in a global context. This broadened the experiences and learning of their students and created unique employment opportunities that may otherwise not have existed. NZQA recognise the high level of innovation and creativity in responding to the global pandemic. For the Taikura, senior elderly students, their wellbeing and care were prioritised. Kahurangi and local students were supported in their online courses. In 2022 they are implementing their Ngā Toi Qualification – developed by them for them. Kōrero from hui show that not only has the whare been led by but is also developing influential people who have gone on to make positive change for their whānau, the wider Takitimu community and the arts housed within Te Whare Tāpere o Takitimu.

Assisting rangatahi in life and in to employment has long been a focus for leaders. At the time of this research 470 whānau members had been supported to obtain their driver's licence. Initiatives such as 'Kete' (business incubation kaupapa) and 'Ōrawa' (leadership programme) have contributed toward learners becoming independently employed. These achievements complement the Takitimu ora goal of shifting whānau experiencing challenges, from languishing to flourishing.

As Te Wānanga Whare Tāpere o Takitimu enhance the learning and quality of life for decedents of Takitimu Waka, Te Kauwae Rangatiratanga are supporting their tuākana o Takitimu Vaka. Pa Ariki o Rarotonga and Tama Huata met in the 1990's and shared their dreams and aspirations for their whānau. At the inaugural Takitimu celebrations in 2008 they reaffirmed their relationship and reciprocal learning relationships were established.

Te Whare Ariki o Takitumu-Pa Ariki ma Kainuku Ariki signed a memorandum of understanding with Te Wānanga Whare Tāpere o Takitimu in November 2020 cementing their relationship. In August 2021 Te Vananga Are Tāpere o Takitumu was officially launched. Vaka Takitumu is to have a tertiary curriculum delivered through the performing arts that will support the revitalisation of their reo, arts and culture. The implementation of this initiative is planned for July of this year. This will reinforce the historical connections of Takitimu Waka to Takitumu Vaka.



Kōrero ā-Whānau

Mai te kōpu o te whaea ki te kōpu o te whenua – Education for all ages

‘The success of the kaupapa is with the whānau’

*“Ko wai tō Kōhanga Reo?” – **kaiako voice***

*“Ko te Kōhanga Reo o Te Wānanga Whare Tāpere o Takitimu!”
– **mokopuna voice***

*“We are about stages not ages” – **Te Kauwae Rangatiratanga***

‘High expectations for students, staff and whānau’

*‘Students are alert to every area of knowledge that they choose to
pursue in their lives’*

*“Ina ka hapa kaore i te whiwhi hamama te pahu ranei mena
ka hapa, ka hapa” – **student voice***

*“Ko Te Whare-Tāpere tō mātou ahua” – **student voice***

*“Tē taea te tu hei kaikaranga ki te marae e ahei ana te ako ki te
wānanga” – **student voice***

*“The wānanga is a village that connects at all levels” – **whānau voice***

*“Ko te mea nui ko te reo” – **student voice***

*“Te Wānanga Whare Tāpere gave me the means to go back to my
hapū and contribute” – **raukura voice***

Ngā kitenga me ngā āheinga anamata

Insights and opportunities

Bennett Road, the new site, will cater for approximately 300 students, 50 in the kōhanga reo. This is a significant increase to the kōhanga reo licence and will enable more mokopuna and their whānau to become part of this journey.

The aspirations for seamless lifelong education are realised through the establishment of Te Wānanga Whare Tāpere o Takitimu model. It is important that they are supported to maintain the connections across the whole pipeline on their new site.

Informal and formal relationships enhance the learning and wellbeing of students. Hau wānanga provides all students of Te Wānanga Whare Tāpere o Takitimu to come together daily to celebrate and learn through tuakana-teina relationships in one space.

The planned extension of a second campus in Rarotonga will further strengthen the intercultural relationships and whakapapa connections of students. This will also uphold the direction of Pa Ariki as key participant of this vision and focus too on building Cook island's te reo, arts and culture.

Te Tari Arotake Mātauranga and Te Mana Tohu Mātauranga o Aotearoa will seek ways to work collaboratively going forward to better respond and report on how whānau, hapū, iwi and waka provide education within their respective rohe, and the critical role that iwi and waka plays in the revitalisation of te reo Māori and mātauranga Māori.



Lynda Pura-Watson
Deputy Chief Executive
Evaluation and Review Māori
Te Tari Arotake Mātauranga



Alex Bidois
Deputy Chief Executive Māori
Mana Tohu Mātauranga o Aotearoa





TE TARI AROTAKE MĀTAURANGA
Education Review Office



Te Kāwanatanga o Aotearoa
New Zealand Government